



# DWV Series

Wall or Window Extract Fans

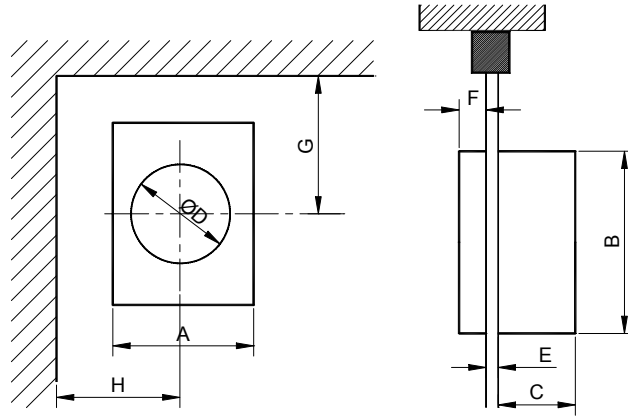


# Wall or Window Extract fans – DWV Series

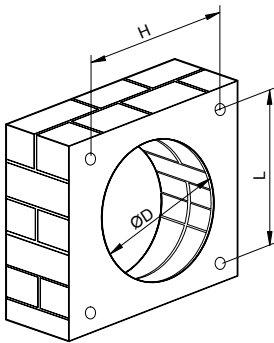


- DWV series are available in manually operated (M) by internal pull cord and automatic (A) models by switch controller.
- Single phase motor 220-240V, 50 Hz with a fuse as thermal protection and class II insulation.
- Max. ambient operating temperature of 45°C
- Single speed operation for DWV 150.
- Two speed operation for DWV 230 & DWV 300 and reversible.
- Natural ventilation position – shutter open, fan off except for model DWV 150 M.
- Models DWV 230 & 300 incorporate neon lights indicating the mode of operation.

## Dimensions

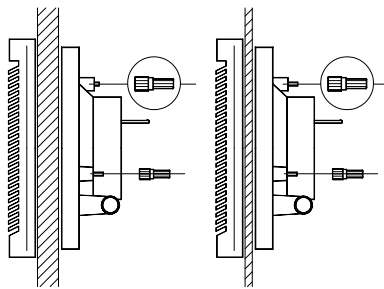


Model	A	B	C	ØD		E		F	G		H	Wt (kg)
				Min.	Max.	Min.	Max.		Min.	Min.		
DWV 150	230	251	109	187	190	3	25	22	160	150	2.0	
DWV 230	300	325	142	259	262	3	25	22	200	185	3.5	
DWV 300	368	403	150	327	330	3	25	22	230	220	5.1	

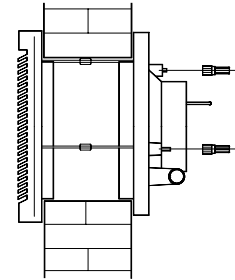


Model	ØD		H	L
	Min.	Max.		
DWV 150	187	190	190.9	212.5
DWV 230	259	262	253.4	278.8
DWV 300	327	330	322.5	357.3

*Installation in glass or panels (of less than 25mm thickness.)*

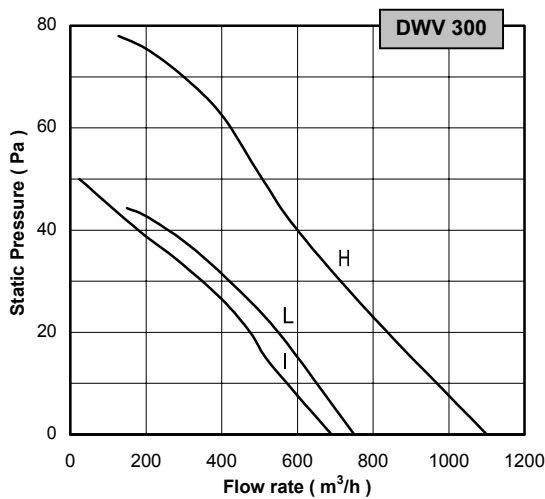
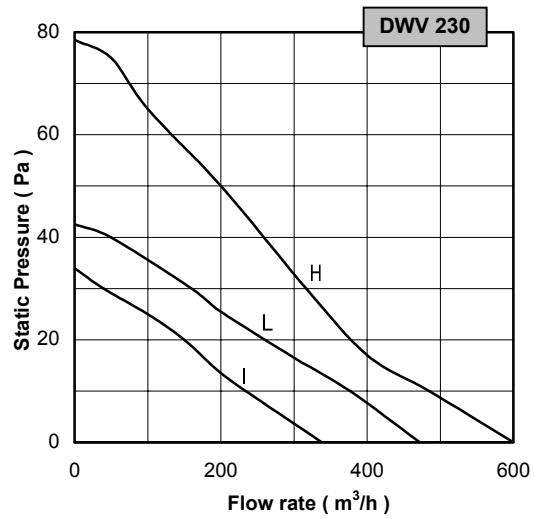
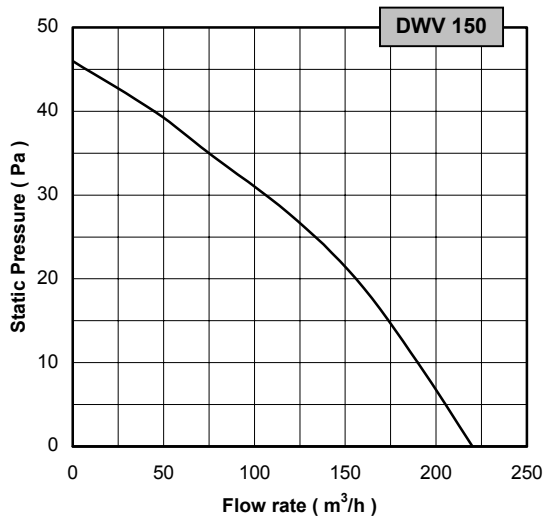


*Installation on walls (up to 300mm thickness.)*



## Technical Data

Model	Max. Q (m3/h)			Power W	Phase	Hz	Max. Amp	Voltage V	Ins. Cl.	dB (A) at 3m	RPM
	Extract		Intake								
	High speed	Low Speed									
DWV 150 M	225	-	-	32	1	50	0.19	220-240	B	39	1800
DWV 150 A	225	-	-	32	1	50	0.19	220-240	B	39	1800
DWV 230 M	600	472	338	34	1	50	0.15	220-240	B	43/37	1250
DWV 230 A	600	472	338	34	1	50	0.15	220-240	B	43/37	1250
DWV 300 M	1100	750	690	68	1	50	0.30	220-240	B	46/38	1150
DWV 300 A	1100	750	690	68	1	50	0.30	220-240	B	46/38	1150

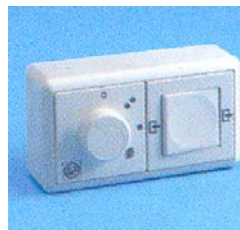


*H: Extraction at high speed*  
*L: Extraction at Low speed*  
*I: Air Intake*

**ACCESSORIES**



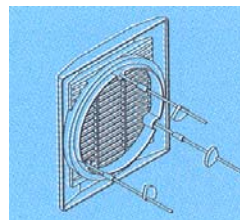
**CONTROL UNIT 150**  
 (For DWV 150A)  
 - On/off switch for fan operation  
 - On/off switch for shutter operation.  
 - 1 unit can operate up to 5 DWV 150 fans.



**CONTROL UNIT 300**  
 (For DWV 230A, DWV 300A)  
 - Fitted with a selector for different modes of fan operation.  
 - A reversing switch, fan extract/supply  
 - 1 unit can operate up to 5 DWV 150 fans.



**CONNECTION CABLE**  
 (7 core wire)  
 - For connection of DWV 230A and DWV 300A to the remote control unit 300. (Supplied on 10m rolls as standard)



**THREADED ROD SET**  
 - Threaded rods and sleeves for use when installing the DWV fans on the walls from 25mm up to 300mm thick.

