



## RDA ROOF UNITS

### Construction

Cylindrical casing is produced in mild steel or galvanised steel mount on a horizontal square base. The rainhood are made of fiberglass as protection against adverse weather conditions. The impeller having manually adjustable pitch blades is made of PPG, PAG or Aluminium.

### Finish

Painting or galvanised after manufacture are normal finishes on all parts.

### Operating Temperature

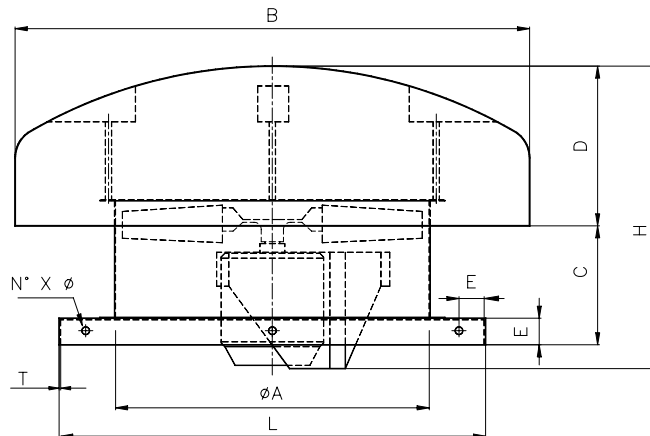
-20°C to +55°C

### Motors

Totally enclosed Class 'F' motor, to a min. IP54 protection are fitted as standard. Standard motor up to 2.2kW are usually supplied on DOL starting, motor 3.0kW and above star/delta starting.

### Option

Spark resistance construction in accordance to AMCA standard 99-0401-86-type C construction can be supplied upon request.

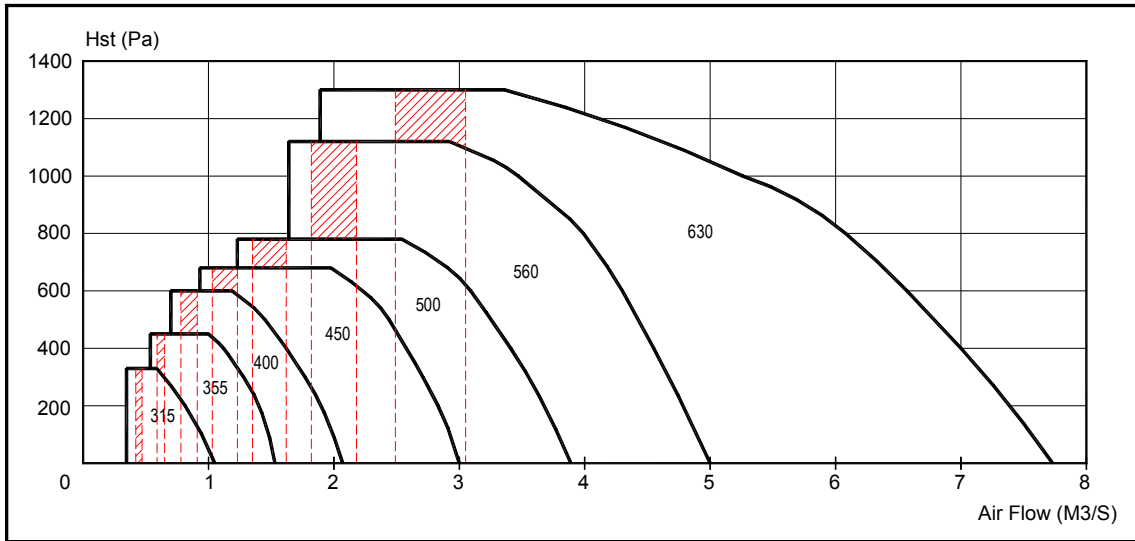


All Dimension in mm.

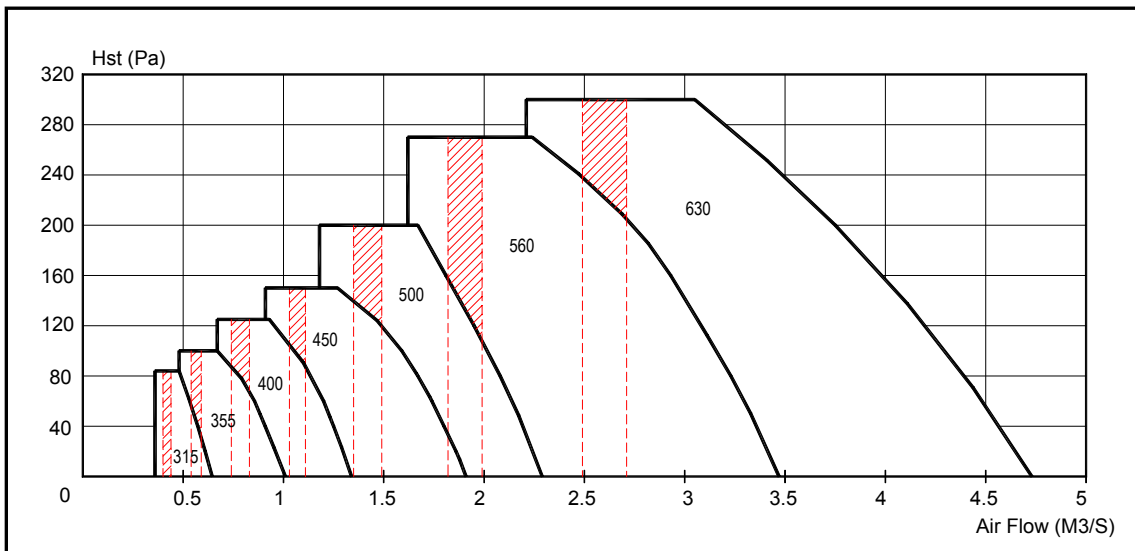
MODEL	A	B	C	D	E	L	H		T	N°	Ø	Weight (kg)	Max. Motor* FrameSize
							MIN	MAX					
400	400	850	217	300	40	600	486	610	3	8	10	22	D90S
450	450	850	237	300	40	660	486	644	3	12	10	25	D90L
500	500	850	248	300	40	730	520	646	3	12	10	29	D90L
560	560	1120	294	400	50	810	623	780	3	12	10	39	D112M
630	630	1120	294	400	50	895	743	780	3	12	12	43	D112M
710	710	1120	356	400	50	990	793	813	4	12	12	64	D112M
800	800	1500	333	535	63	1100	888	1000	4	12	12	89	D132M
900	900	1500	422	535	63	1235	940	1119	4	12	12	107	D160M
1000	1000	1800	477	645	63	1375	980	1226	4	12	12	135	D160M
1120	1120	1800	577	645	75	1550	1079	1454	5	12	12	203	D225M
1250	1250	2050	627	810	75	1710	1170	1699	5	12	12	292	D250M
1400	1400	2050	697	810	75	1800	1210	1713	5	12	12	409	D250M

\* Motor frame size beyond this range, please consult KRUGER for details --- Weight without motor and impeller.

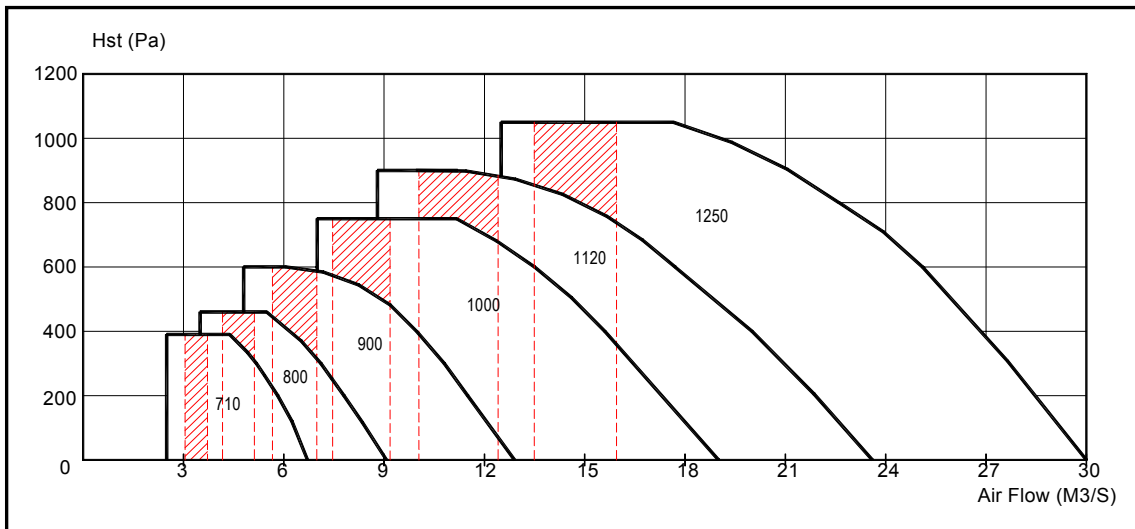
## 2 POLES - 2800 RPM



## 4 POLES - 1420 RPM

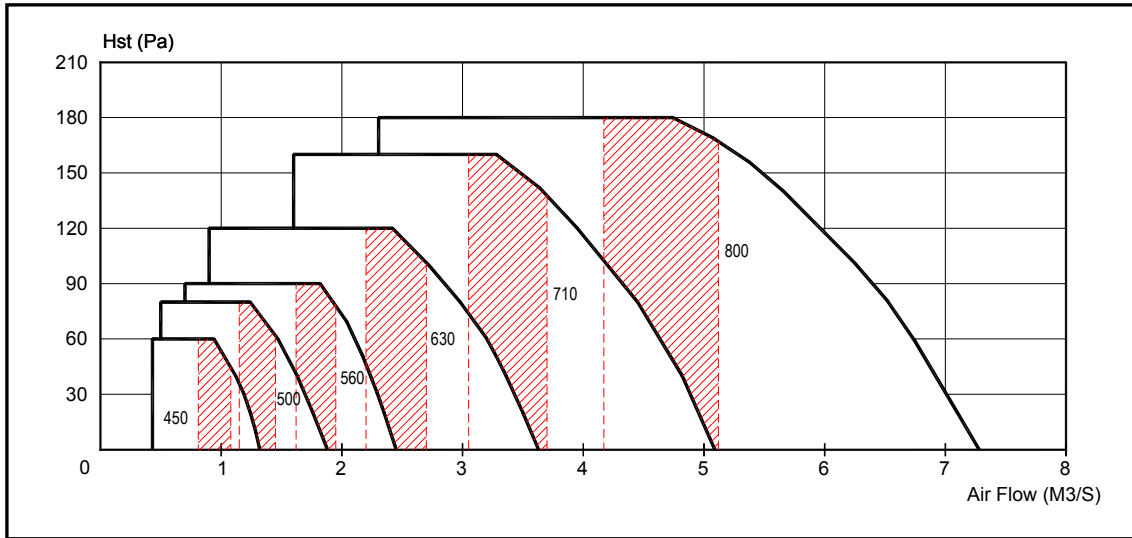


## 4 POLES - 1420 RPM

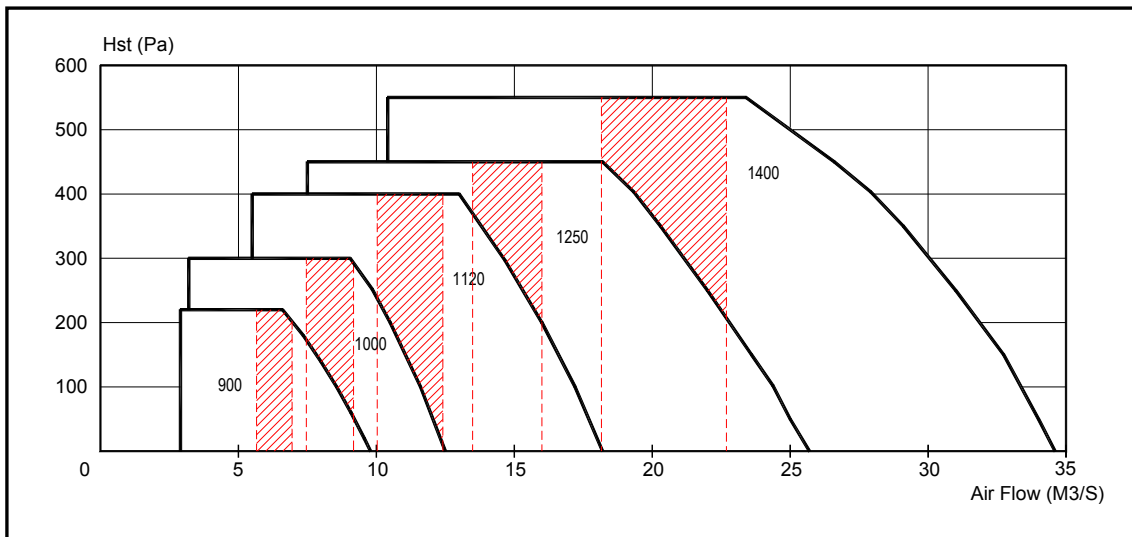


\*\*\* Shaded portion is the recommended operating range based on the duct velocity consideration (friction loss of 1 Pa/m)

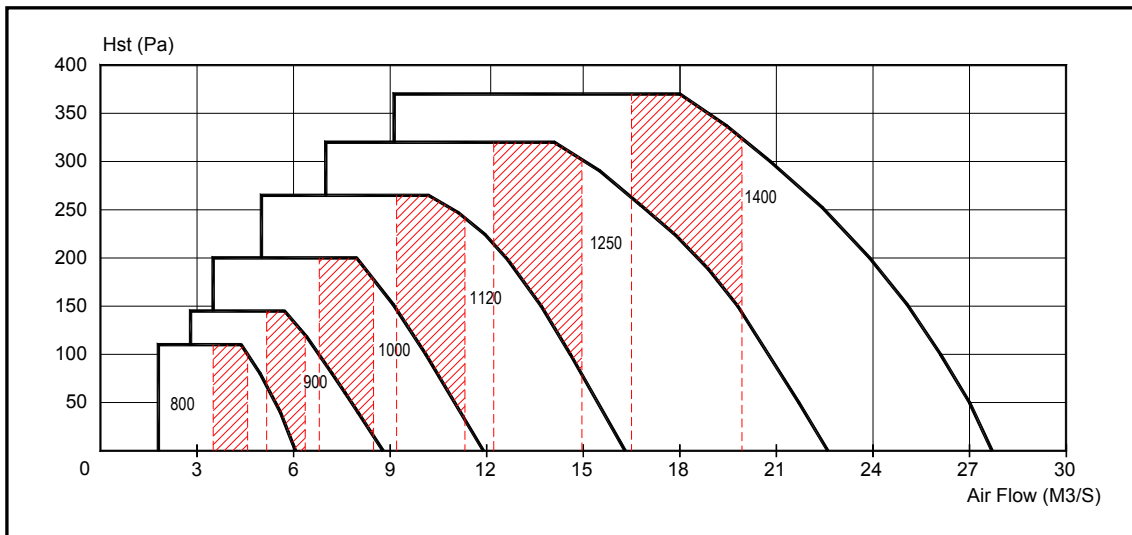
## 6 POLES - 900 RPM



## 6 POLES - 900 RPM

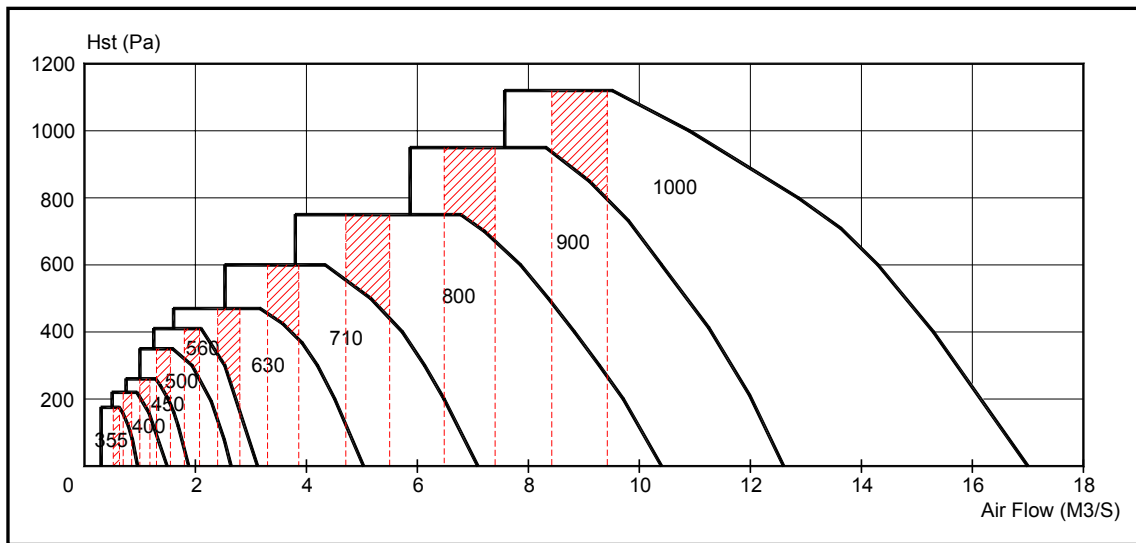


## 8 POLES - 720 RPM

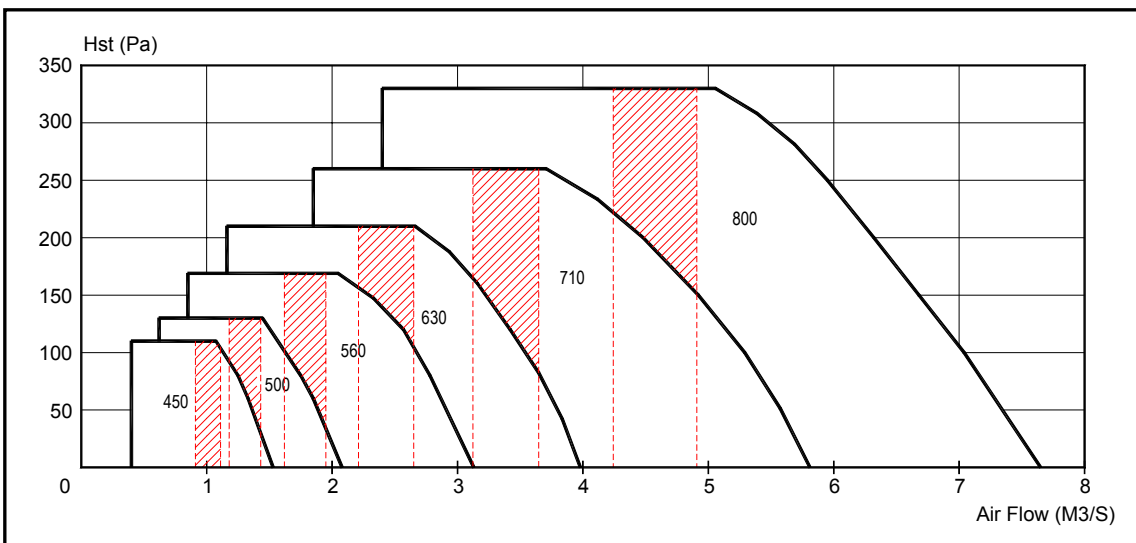


\*\*\* Shaded portion is the recommended operating range based on the duct velocity consideration (friction loss of 1 Pa/m)

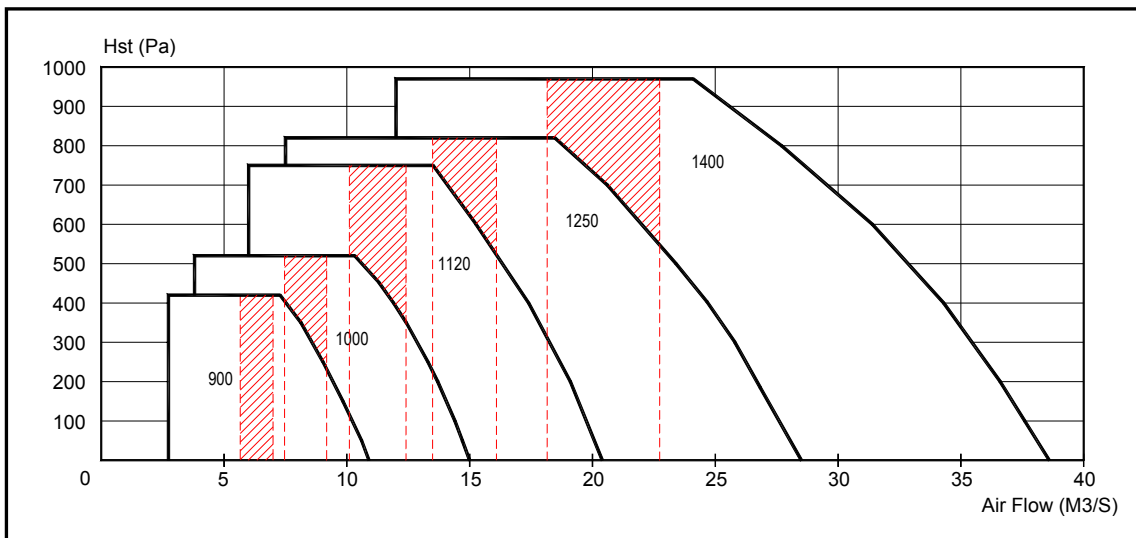
## 4 POLES - 1750 RPM



## 6 POLES - 1150 RPM



## 6 POLES - 1150 RPM



\*\*\* Shaded portion is the recommended operating range based on the duct velocity consideration (friction loss of 1 Pa/m)