



RDA ROOF UNITS

Construction

Cylindrical casing is produced in mild steel or galvanised steel mount on a horizontal square base. The rainhood are made of fiberglass as protection against adverse weather conditions. The impeller having manually adjustable pitch blades is made of PPG, PAG or pressure-casted Aluminium.

Finish

Painting or galvanised after manufacture are normal finishes on all parts.

Operating Temperature

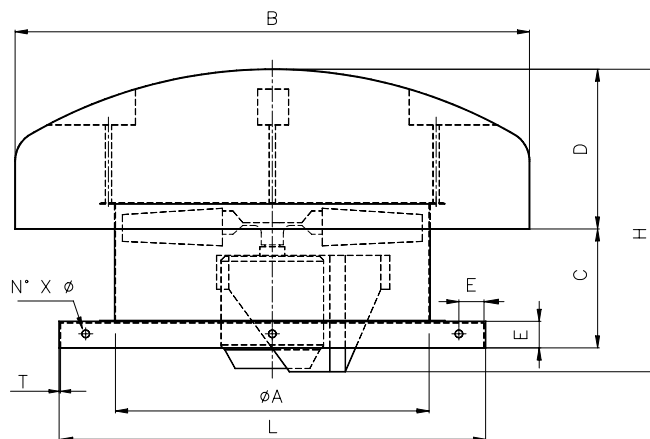
-20°C to +55°C

Motors

Totally enclosed Class 'F' motor, to a min. IP54 protection are fitted as standard. Standard motor up to 2.2kW are usually supplied on DOL starting, motor 3.0kW and above star/delta starting.

Option

Spark resistance construction in accordance to AMCA standard 99-0401-86-type C construction can be supplied upon request.

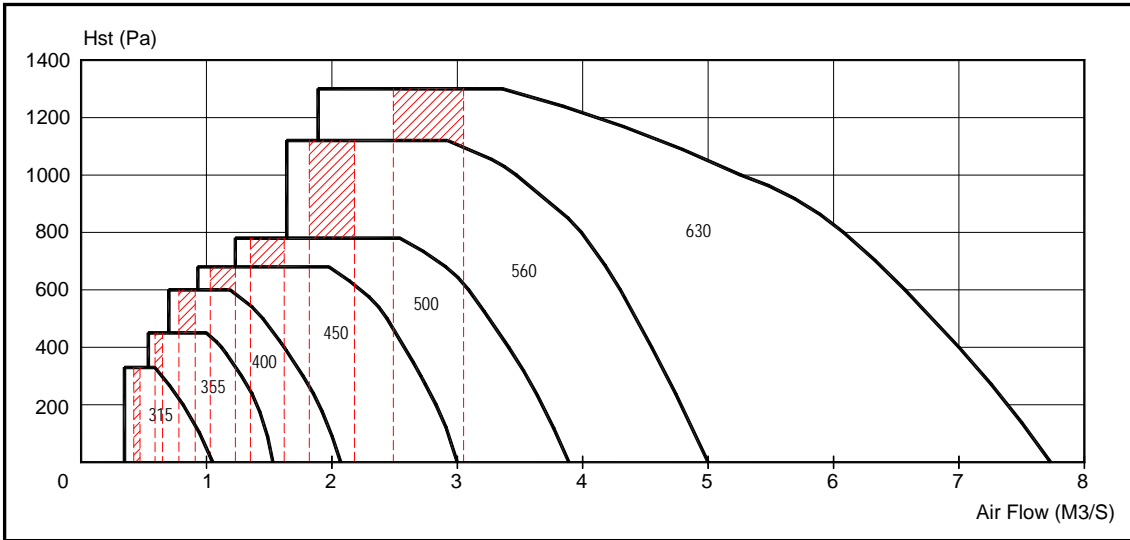


All Dimension in mm.

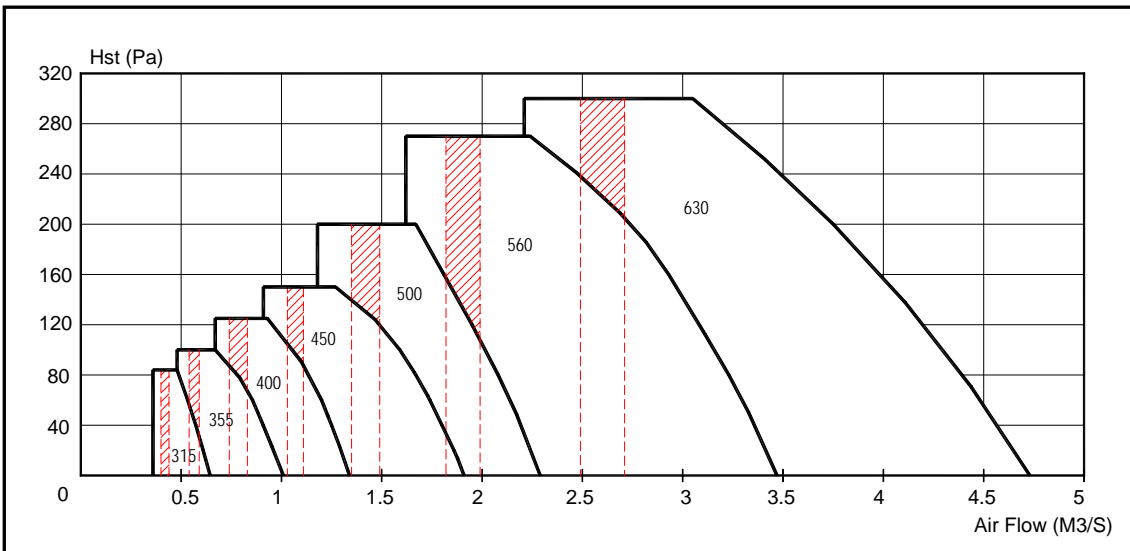
MODEL	A	B	C	D	E	L	H		T	N°	Ø	Weight (kg)	Max. Motor* FrameSize
							MIN	MAX					
400	400	850	156	300	40	600	486	547	3	8	10	22	D90S
450	450	850	156	300	40	660	486	567	3	12	10	25	D90L
500	500	850	193	300	40	730	520	601	3	12	10	29	D90L
560	560	1120	253	400	50	810	523	703	3	12	10	39	D112M
630	630	1120	253	400	50	895	643	823	3	12	12	43	D112M
710	710	1120	255	400	50	990	693	822	4	12	12	64	D112M
800	800	1500	333	450	63	1100	803	1019	4	12	12	89	D132M
900	900	1500	333	450	63	1235	855	1018	4	12	12	107	D160M
1000	1000	1800	333	645	63	1375	850	1013	4	12	12	135	D160M
1120	1120	1800	333	645	75	1550	1079	1278	5	12	12	203	D225M
1250	1250	2050	333	810	75	1710	1170	1381	5	12	12	292	D250M
1400	1400	2050	333	810	75	1800	1210	1440	5	12	12	409	D250M

* Motor frame size beyond this range, please consult KRUGER for details --- Weight without motor and impeller.

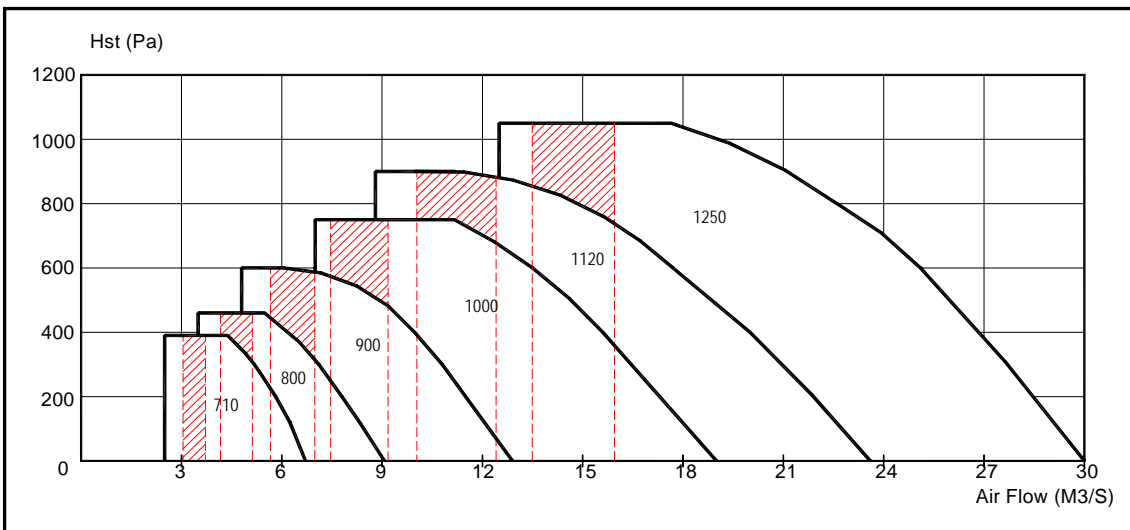
2 POLES - 2800 RPM



4 POLES - 1420 RPM

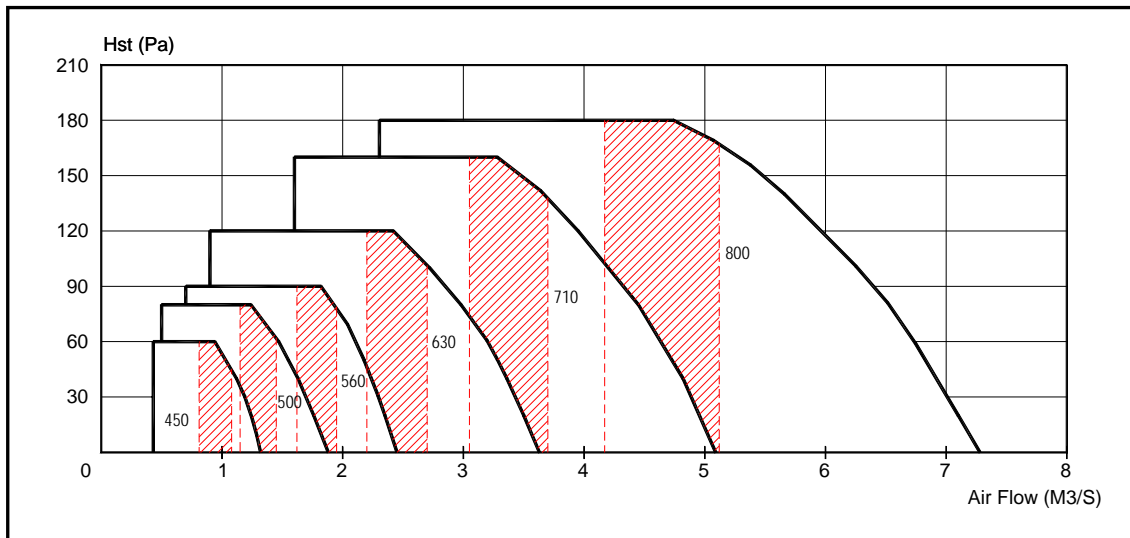


4 POLES - 1420 RPM

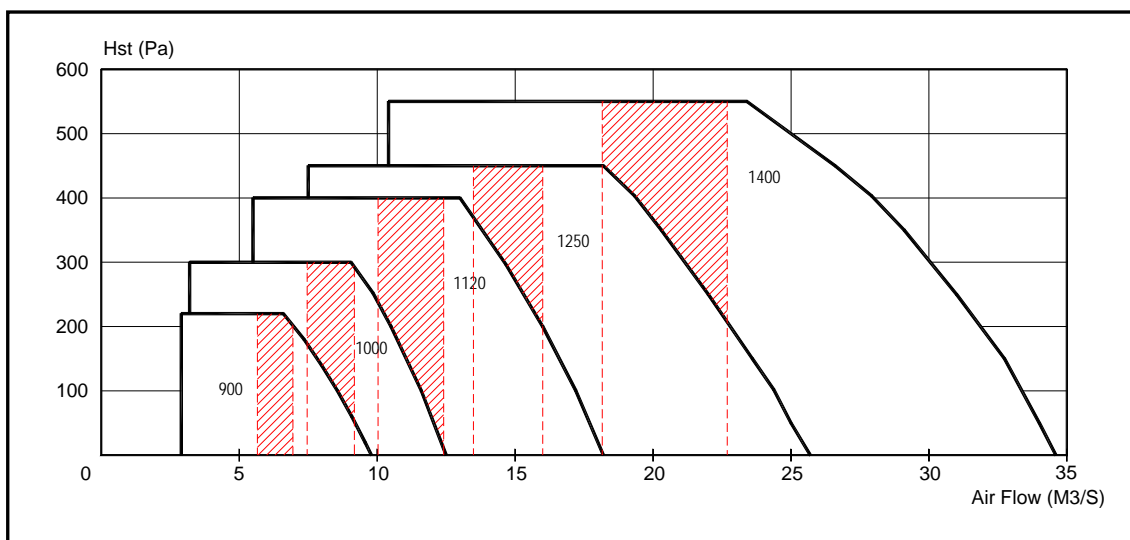


*** Shaded portion is the recommended operating range based on the duct velocity consideration (friction loss of 1 Pa/m)

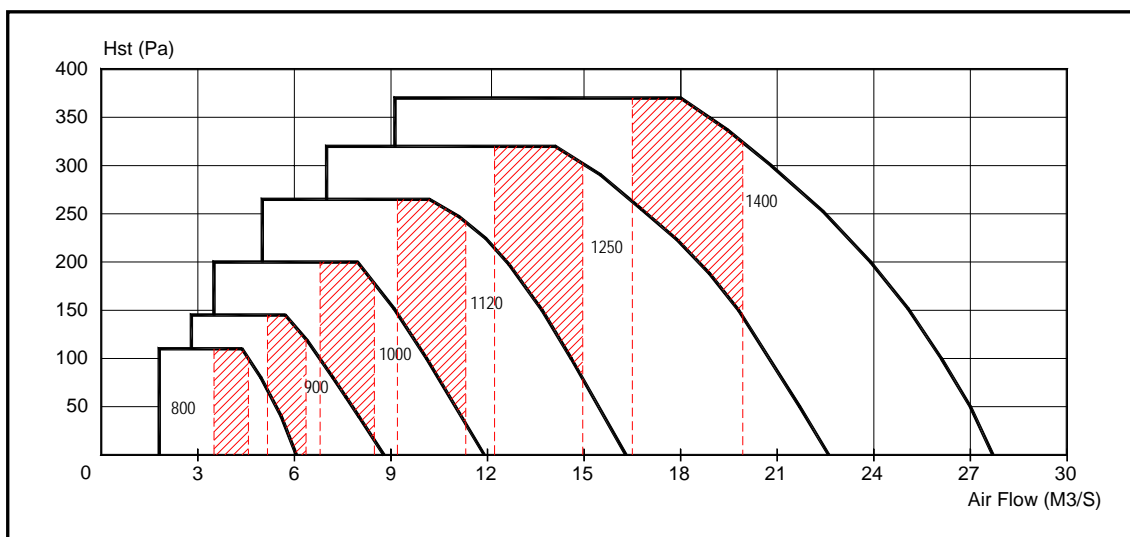
6 POLES - 900 RPM



6 POLES - 900 RPM

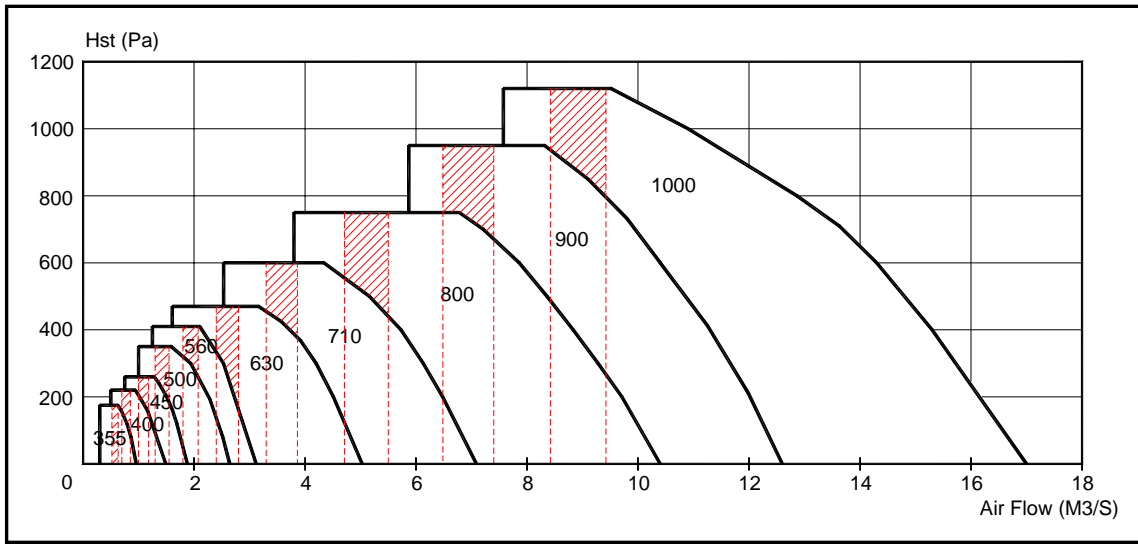


8 POLES - 720 RPM

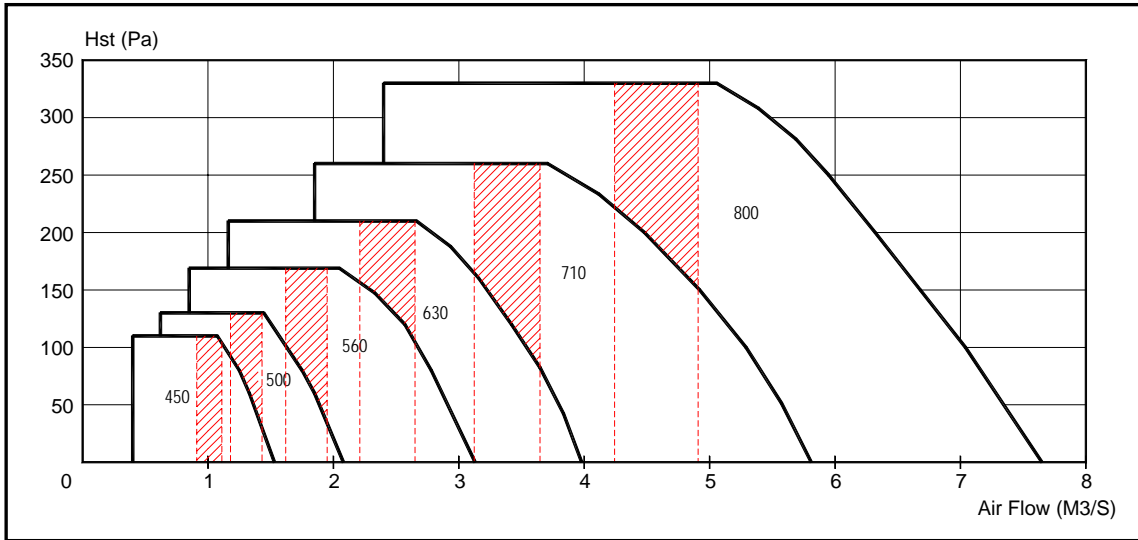


*** Shaded portion is the recommended operating range based on the duct velocity consideration (friction loss of 1 Pa/m)

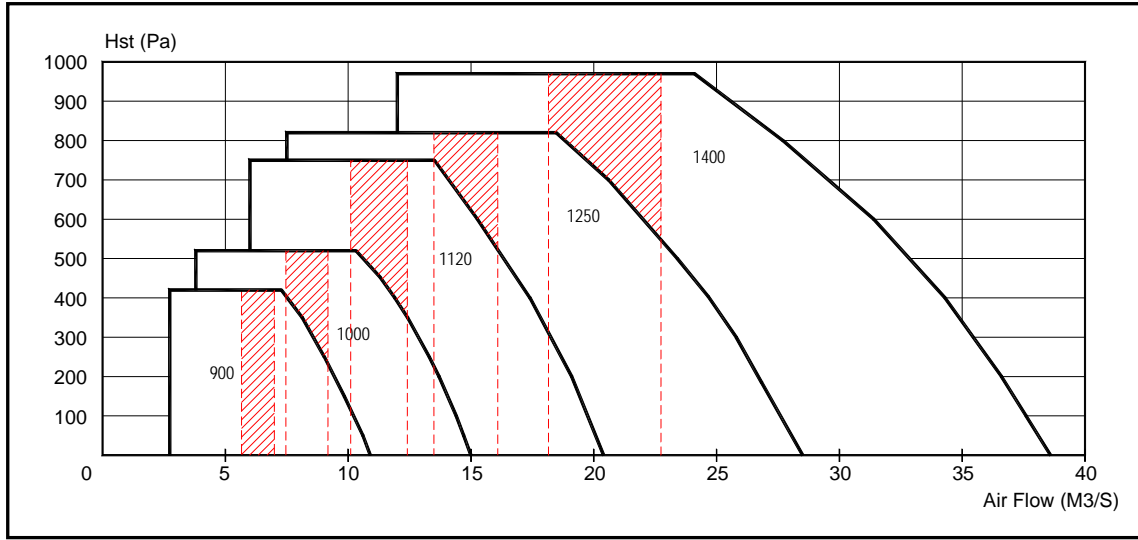
4 POLES - 1750 RPM



6 POLES - 1150 RPM



6 POLES - 1150 RPM



*** Shaded portion is the recommended operating range based on the duct velocity consideration (friction loss of 1 Pa/m)