

MTD Series

Mixed Flow In-Line Duct Fan



Mixed Flow In-Line Duct Fan – MTD Series

KRUGER

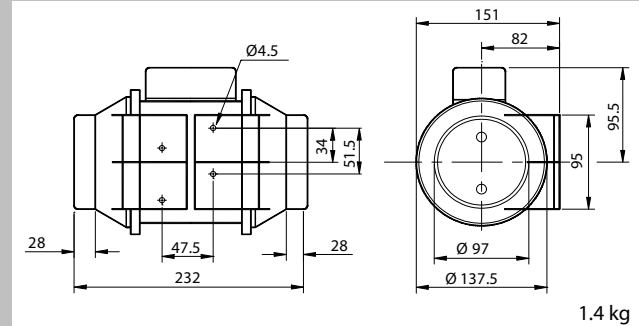
- Specifically designed for direct connection with industrial circular ducting of standard diameter.
- Incorporate a powerful motor which is factory matched to a mixed flow impeller.
- Delivers high airflow performance with minimum noise generation and high static pressure typically found in ducted ventilation systems.
- Model 200 and below are manufactured in tough reinforced plastic, while models 250 & 315 in steel casing. All models are finished in tough epoxy-polyester paint coating.
- Impeller blades of model 200 & below are moulded in tough ABS plastic, models 250 & 315 are constructed from pressed galvanised sheet steel.
- Easy installation and maintenance - support brackets allow the motor and impeller assembly to be fitted or removed without dismantling the adjacent ducting.
- Fitted with direct connection two speed motors as standard with thermal overload protection. All motors are suitable for speed control regulation using electronic or auto-transformer.
- Max. operating temperature +40 °C.



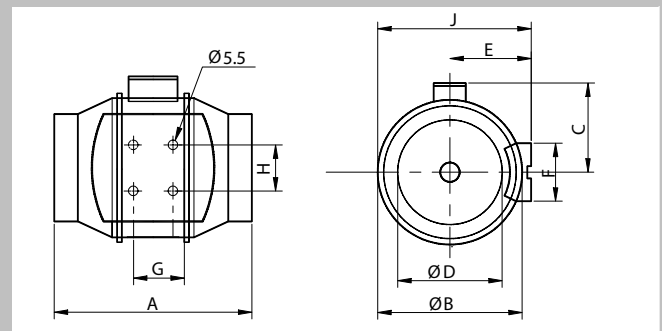
Kruger Ventilation Industries Asia Co., Ltd certifies that the **MTD series** shown herein is licensed to bear the AMCA Seal. The ratings shown are based on tests and procedures performed in accordance with AMCA publication 211 and AMCA publication 311 and comply with the requirements of the AMCA Certified Ratings Program. Models MTD 100/2-6 and MTD 125-6 are not licensed by AMCA international.

Dimension

MTD 100/1



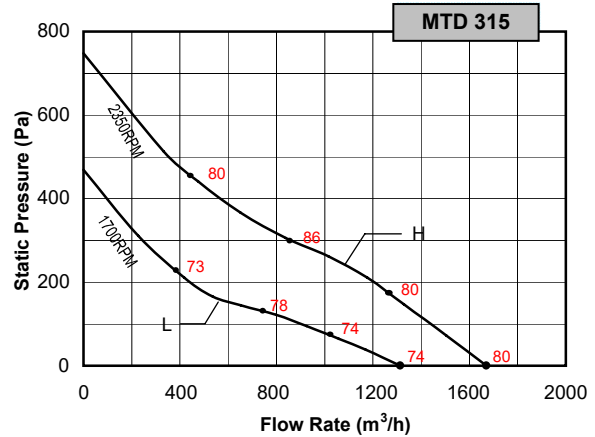
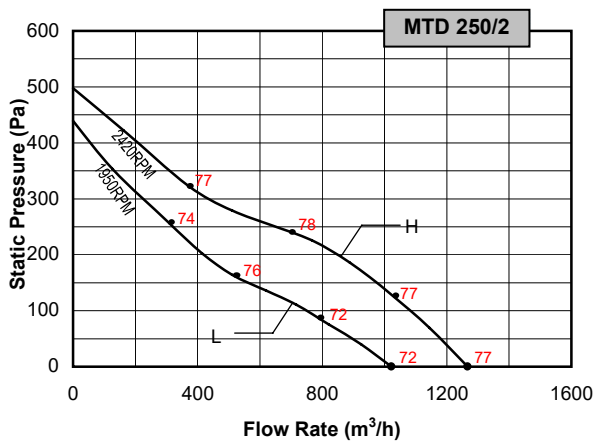
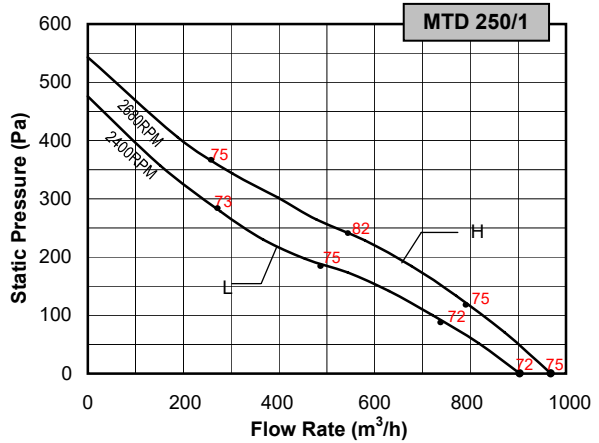
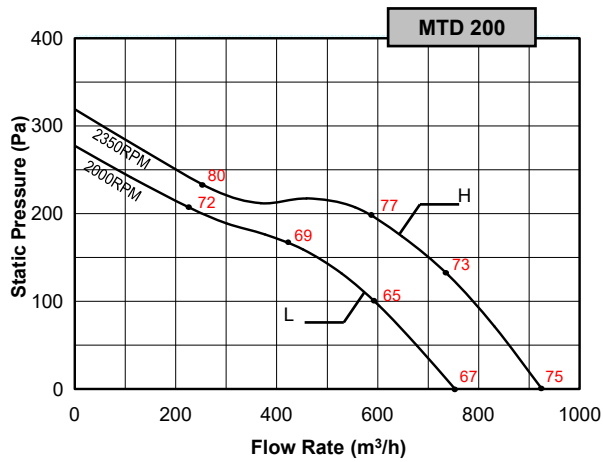
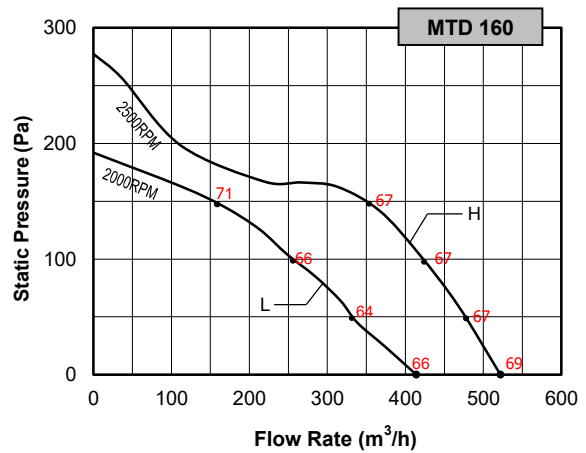
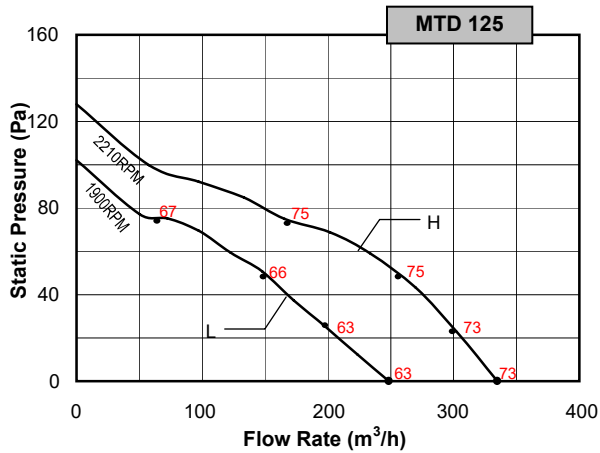
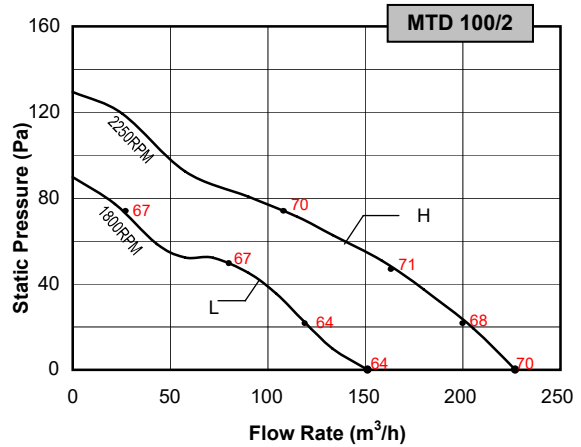
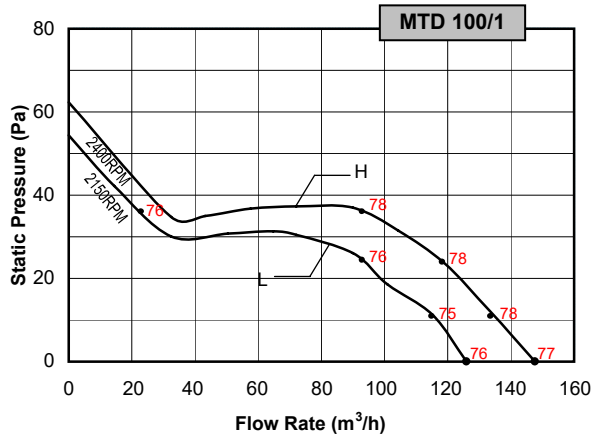
MTD 100/2 -315



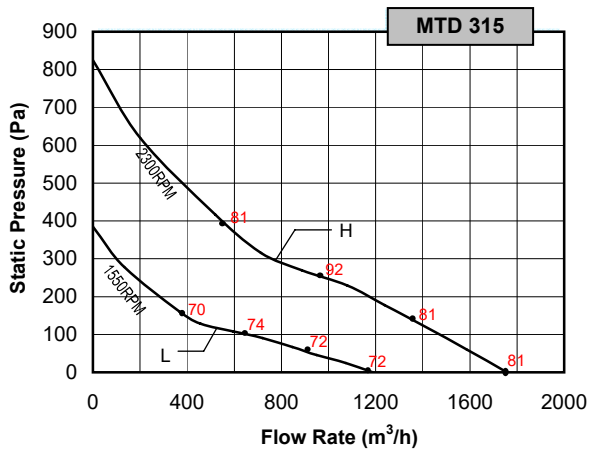
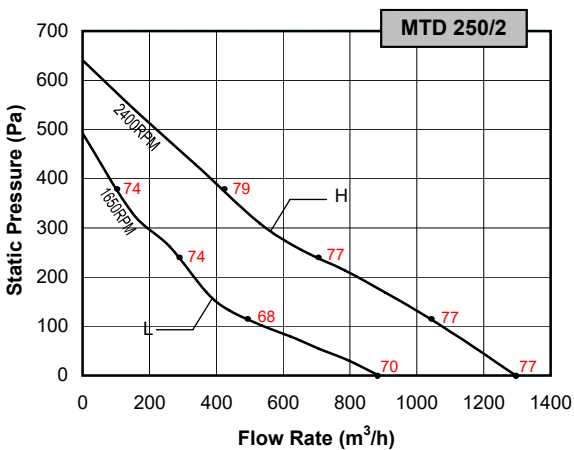
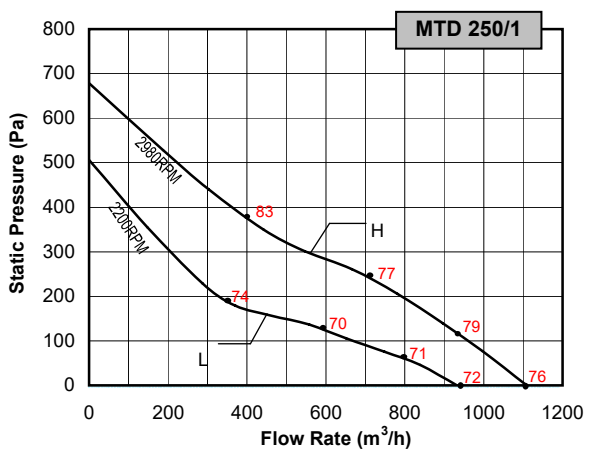
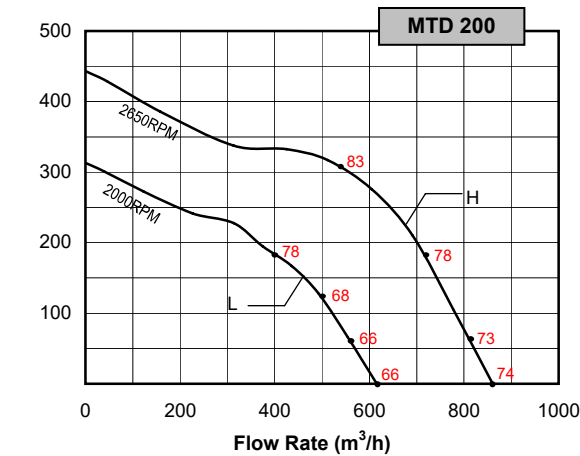
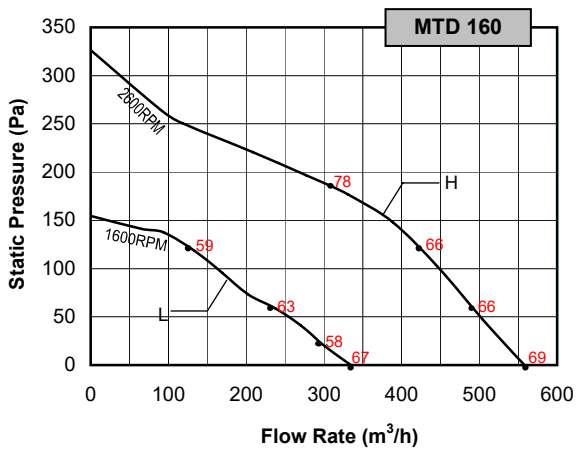
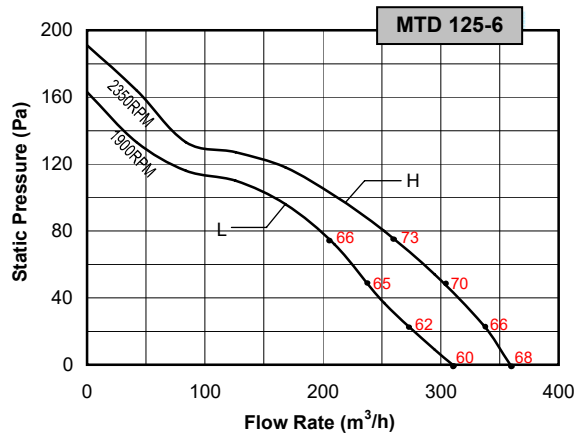
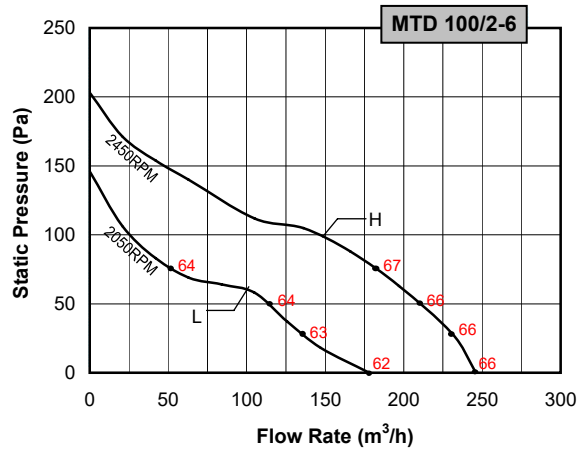
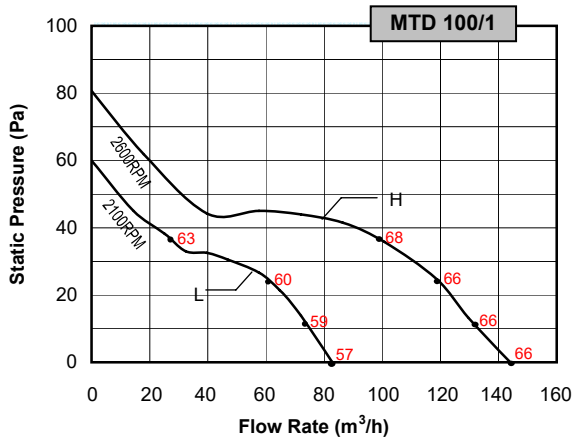
Dimension Data

Model	A	$\varnothing B$	C	$\varnothing D$	E	F	G	H	J	kg
MTD 100/2	303	176	115	97	100	90	80	60	188	2.0
MTD 100/2-6	303	176	115	97	100	90	80	60	188	2.0
MTD 125	258	176	115	123	100	90	80	60	188	2.0
MTD 125-6	258	176	115	123	100	90	80	60	188	2.0
MTD 160	295	200	127	157	112	130	80	60	212	4.9
MTD 200	302	217	141	198	124	140	100	94	232.5	4.9
MTD 250	386	272	192	248	155	168	145	140	291	9.4
MTD 315	450	336	224	312	188	210	182	178	356	14.0

All dimensions in mm.



- Speed (RPM) shown is nominal. Performance is based on actual speed of test.
- Performance ratings do not include the effects of appurtenances (accessories).
- Values shown are fan inlet Lw(A) sound power level for installation type D: ducted inlet, ducted outlet. Ratings include the effect of duct and correction.
- The A-weighted sound ratings shown have been calculated per AMCA International Standard 301.

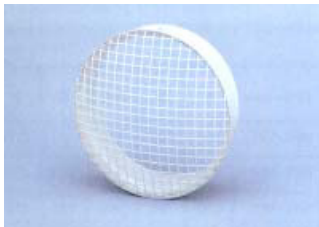


- Speed (RPM) shown is nominal. Performance is based on actual speed of test.
- Performance ratings do not include the effects of appurtenances (accessories).
- Values shown are fan inlet Lw(A) sound power level for installation type D: ducted inlet, ducted outlet. Ratings include the effect of duct and correction.
- The A-weighted sound ratings shown have been calculated per AMCA International Standard 301.
- MTD 100/2-6 and MTD 125-6 are not licensed by AMCA

Technical Data											
Model	Max Q m ³ /h	Power W	Motor Protection	Phase	N° Pole	Voltage V	Hz	Max Amp	Insulation Class	dB (A) at 3m	RPM
MTD 100/1	148 / 125	33 / 20	IP44	1	2	230	50	0.25 / 0.15	B	58 / 56	2400 / 2150
	145 / 85	31 / 21	IP44	1	2	230	60	0.18 / 0.13	B	45 / 37	2600 / 2100
MTD 100/2	225 / 150	44 / 27	IP44	1	2	230	50	0.26 / 0.18	B	50 / 44	2250 / 1800
MTD 100/2-6	250 / 185	55 / 37	IP44	1	2	230	60	0.26 / 0.18	B	46 / 42	2450 / 2050
MTD 125	335 / 250	49 / 33	IP44	1	2	230	50	0.37 / 0.26	B	52 / 42	2210 / 1900
MTD 125-6	360 / 300	55 / 39	IP44	1	2	230	60	0.37 / 0.26	B	51 / 40	2350 / 1900
MTD 160	520 / 414	55 / 48	IP44	1	2	230	50	0.30 / 0.22	B	48 / 41	2500 / 2000
	558 / 335	68 / 52	IP44	1	2	230	60	0.31 / 0.23	B	49 / 38	2600 / 1600
MTD 200	920 / 750	116 / 107	IP44	1	2	230	50	0.55 / 0.41	B	55 / 48	2350 / 2000
	860 / 615	170 / 109	IP44	1	2	230	60	0.74 / 0.51	B	54 / 46	2650 / 2000
MTD 250/1	970 / 905	130 / 101	IP44	1	2	230	50	0.65 / 0.44	B	54 / 51	2680 / 2400
	1110 / 932	180 / 135	IP44	1	2	230	60	0.78 / 0.59	B	56 / 52	2980 / 2200
MTD 250/2	1270 / 1020	192 / 141	IP44	1	2	230	50	0.83 / 0.61	B	57 / 52	2420 / 1950
	1295 / 885	257 / 162	IP44	1	2	230	60	1.12 / 0.70	B	57 / 50	2400 / 1650
MTD 315	1670 / 1315	283 / 175	IP44	1	2	230	50	1.30 / 0.90	B	59 / 53	2350 / 1700
	1757 / 1188	352 / 186	IP44	1	2	230	60	1.53 / 1.00	B	60 / 52	2300 / 1550

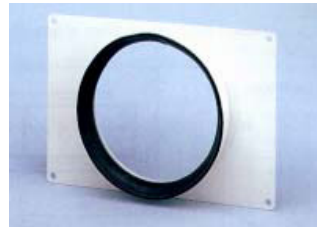
- Speed (RPM) shown is nominal. Performance is based on actual speed of test.
- Performance ratings do not include the effects of appurtenances (accessories).
- dB(A) at 3m with ducted inlet and outlet at free field conditions. dB(A) is not licensed by AMCA International.
- MTD 100/2-6 and MTD 125-6 are not licensed by AMCA.

Accessories



Grilles

Mounted at the inlet or outlet of the fan, the grille prevents the entry of any foreign objects.



Rectangular Duct Adapters

The adapter enables the MTD fan to be connected to rectangular ducting



Back-Draft Shutter

Mounted at the outlet of the MTD fan, the shutter prevents the air re-circulating when the fan is not in use.

KRUGER VENTILATION GROUP

THAILAND (Regional Headquarters)

KRUGER VENTILATION INDUSTRIES ASIA CO., LTD.

30/159 Moo 1, Sinsakorn Industrial Estate, Chetsadawithi Road,
Khok Kham, Mueng, Samuthsakorn 74000, Thailand
Tel: +662 1054298 Fax: +662 0248256-9
Email: mktg@krugerventasia.co.th
Website: www.krugerfan.com

INDIA (Haryana)

KRUGER VENTILATION INDUSTRIES (INDIA) PVT. LTD.

Plant-1 :Khasra No. 150/20/2/1, 151/16/2/2,
Village-Rohad, Bahadurgarh, Jajhjar, Haryana - 124507,
India Plant-2 : Khasra No.: 2-0, 14/3, 4-10, 15/1, 6-2, 20
Area: 4 Kanal 4 Marla, Khewat No.: 1007/868,
Khata No.: 1068, Killa No.: 146/6 (7-12, 7/1)
Village Rohad, Bahadurgarh-Rohtak Road,
Bahadurgarh, District Jhajjar - 124507, Haryana, India
Tel: +91 995 8991 652, +91 995 8991 660, +91 858 6966 303
Email: sales.kni@krugerindia.com

INDIA (Mumbai)

KRUGER VENTILATION INDUSTRIES (INDIA) PVT. LTD.

Village-Kalamgaon, Mumbai-Nashik Highway,
Tal-Shahapur, Dist. Thane- 421 601. Maharashtra, India
Tel. : +91 996 0558 899 / 997 5577 211
Fax : +91 2527 240075
E-mail : sales@krugerindia.com

INDIA (Chennai)

KRUGER VENTILATION INDUSTRIES (INDIA) PVT. LTD.

Plot No: E-23/1, Survey No – 279, SIPCOT Industrial Park,
Irungattukottai, Sriperumbudur Taluk, Kancheepuram District,
Tamil Nadu, Pin – 602117, India.
Tel. : +91 978 9982 290
E-mail : giriprabu@krugerindia.com

MIDDLE EAST

CONTACT : KRUGER VENTILATION INDUSTRIES (INDIA) PVT. LTD.

Tel. : +91 9766323730 / +91 9975577211
Email : rahul@krugerindia.com

MALAYSIA

KRUVENT INDUSTRIES (M) SDN. BHD.

Lot 850, Jalan Subang 7, Taman Perindustrian Subang,
47500, Subang Jaya, Selangor D.E., Malaysia
Tel: +603 80743399 Fax: +603 80743388
Email: mktg@kruger.com.my

INDONESIA

PT. KRUGER VENTILATION INDONESIA

Jl. Teuku Umar No. 20, Karawaci,
Tangerang 15115, Indonesia
Tel: +62 21-5512288
Fax: +62 21-5513502
Email: mktg@krugerindo.co.id

AUSTRALIA

S&P-KRUGER AUSTRALIA PTY. LTD.

2 Cunningham St, Moorebank N.S.W. 2170
Tel: +612-98227747
Fax: +612-98227757
Email: info@sandpkruger.com.au

VIETNAM

KRUGER VENTILATION INDUSTRIES (VIETNAM) CO., LTD.

Lot A7, 2-4, C2 Road, Thanh Thanh Cong IZ,
Trang Bang District, Tay Ninh Province, Vietnam
Tel: +84-276 3585200/01/02 Fax: +84-276 3585199
Email: mktg@krugervn.com

CHINA (Shanghai)

SHANGHAI KRUGER VENTILATION CO., LTD.

No. 500 Yuanguo Road, Anting, Jiading District,
Shanghai 201814, P.R. China
Tel: +86 21-69573266 Fax: +86 21-69573296
Email: ksh@krugerfan.com.cn
Website: www.krugerfan.com.cn

CHINA (Tianjin)

TIANJIN KRUGER VENTILATION CO., LTD.

Jingjin Science and Technology Park,
Wuqing District, Tianjin 301700, P.R. China
Tel: +86 22-22143480 Fax: +86 22-22143482
Email: ktj@krugerfan.com.cn

CHINA (Guangzhou)

GUANGZHOU KRUGER VENTILATION CO., LTD.

No. 9 Huahui Road, Huashan Town,
Huadu District Guangzhou 510880, P.R. China
Tel: +86 20-66356635 Fax: +86 20-86786001/86786500
Email: kgv@krugerfan.com.cn

CHINA (Wuhan)

WUHAN KRUGER VENTILATION CO., LTD.

No. 805 Huian Avenue, Dongxihu District Wuhan,
Hubei 430040, P.R. China
Tel: +86 27- 83248840
Fax: +86 27- 83261886
Email: kwv@krugerfan.com.cn

HONG KONG

KRUGER VENTILATION (HONG KONG) LIMITED.

Flat E, 8/F, Yeung Yiu Chung (No.8) Industrial Building,
20 Wang Hoi Road, Kowloon Bay, Kowloon, Hong Kong
Tel: +852 22469182 Fax: +852 22469187
Email: info@kruger.com.hk

TAIPEI

KRUGER VENTILATION (TAIWAN) CO., LTD.

No. 157, Ping-an Rd, Hengfeng Village,
Dayuan Shiang Taoyuan County 337, Taiwan
Tel: +886 3-3859119 Fax: +886 3-3859118
Email: sales@krugertwn.com.tw

KOREA

NEOMATE CO., LTD.

80, Seogeunnae-gil, Paltan-myeon, Hwaseongsi,
Gyeonggi-do 18575, Korea
Tel: +82-2-2679-2052 Fax: +82-2-2679-2174
Email: y7890@neomate.co.kr

PHILIPPINES

KRUGER M & E INDUSTRIES CORP.

B3 Welborne Industrial Park, Bancal, Carmona,
Cavite, Philippines 4116
Tel: +63-917-561-9088, +63-917-596-7288,
+63-917-712-8438, +63-917-306-8288 Fax: -
Email: mktg.ph@krugerfan.com

SINGAPORE

KRUGER ENGINEERING PTE. LTD.

2 Venture Drive #20-23, Vision Exchange,
Singapore 608526.
Tel: +65 68631191 Fax: +65 68631151
Email: mktg@krugerfan.com