



RDA ROOF FANS

Construction

Cylindrical casing is produced in mild steel or galvanized steel mounted on a horizontal square base. The rainhood is made of fiberglass for protection against adverse weather conditions. The impeller having manually adjustable pitch blades is made of PPG, PAG or pressure-casted aluminium.

Finish

Painting or galvanized after manufacture is normal finish on all parts.

Operating Temperature

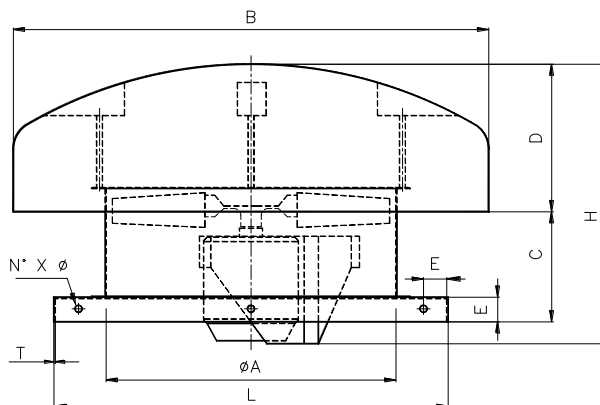
-20°C to +55°C

Motors

Totally enclosed Class 'F' motor, with a min. IP54 protection is fitted as standard. Standard motor up to 2.2kW are usually supplied on DOL starting, motor 3.0kW and above are star/delta starting.

Option

Spark resistance construction in accordance with AMCA standard 99-0401-86-type C construction can be supplied upon request.



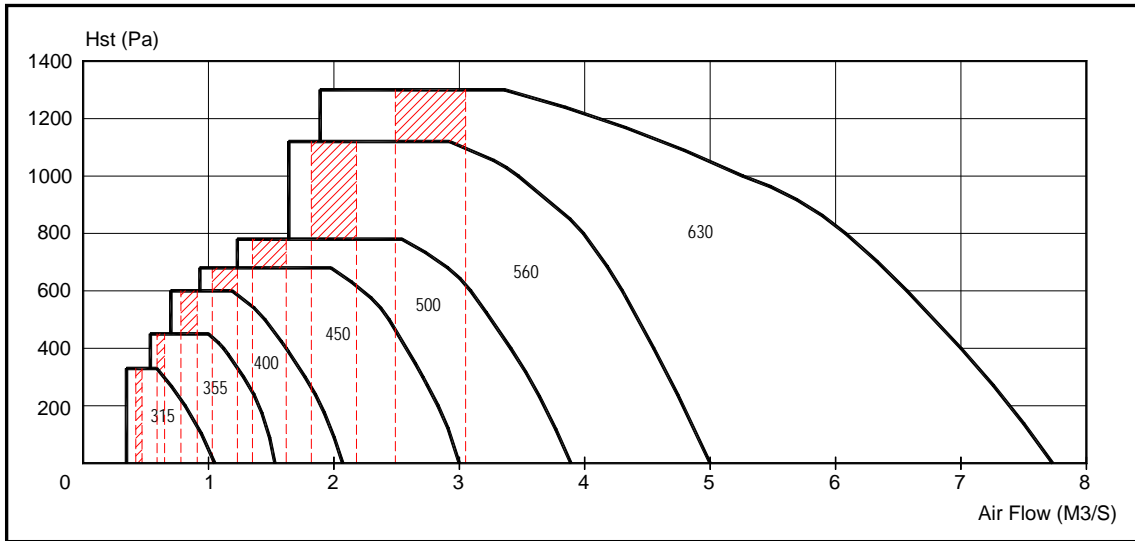
All Dimension in mm.

| MODEL | A | B | C | D | E | L | H | | T | N° | Ø | Weight (kg) | Max. Motor* Frame Size |
|-------|------|------|-----|-----|----|------|------|------|---|----|----|-------------|------------------------|
| | | | | | | | MIN | MAX | | | | | |
| 400 | 400 | 850 | 217 | 300 | 40 | 600 | 486 | 547 | 3 | 8 | 10 | 22 | D90S |
| 450 | 450 | 850 | 237 | 300 | 40 | 660 | 486 | 567 | 3 | 12 | 10 | 25 | D90L |
| 500 | 500 | 850 | 248 | 300 | 40 | 730 | 520 | 601 | 3 | 12 | 10 | 29 | D90L |
| 560 | 560 | 1120 | 294 | 400 | 50 | 810 | 623 | 703 | 3 | 12 | 10 | 39 | D112M |
| 630 | 630 | 1120 | 294 | 400 | 50 | 895 | 743 | 823 | 3 | 12 | 12 | 43 | D112M |
| 710 | 710 | 1120 | 356 | 400 | 50 | 990 | 793 | 822 | 4 | 12 | 12 | 64 | D112M |
| 800 | 800 | 1500 | 333 | 535 | 63 | 1100 | 888 | 1019 | 4 | 12 | 12 | 89 | D132M |
| 900 | 900 | 1500 | 422 | 535 | 63 | 1235 | 940 | 1018 | 4 | 12 | 12 | 107 | D160M |
| 1000 | 1000 | 1800 | 477 | 645 | 63 | 1375 | 980 | 1013 | 4 | 12 | 12 | 135 | D160M |
| 1120 | 1120 | 1800 | 577 | 645 | 75 | 1550 | 1079 | 1278 | 5 | 12 | 12 | 203 | D225M |
| 1250 | 1250 | 2050 | 627 | 810 | 75 | 1710 | 1170 | 1381 | 5 | 12 | 12 | 292 | D250M |
| 1400 | 1400 | 2050 | 697 | 810 | 75 | 1800 | 1210 | 1440 | 5 | 12 | 12 | 409 | D250M |

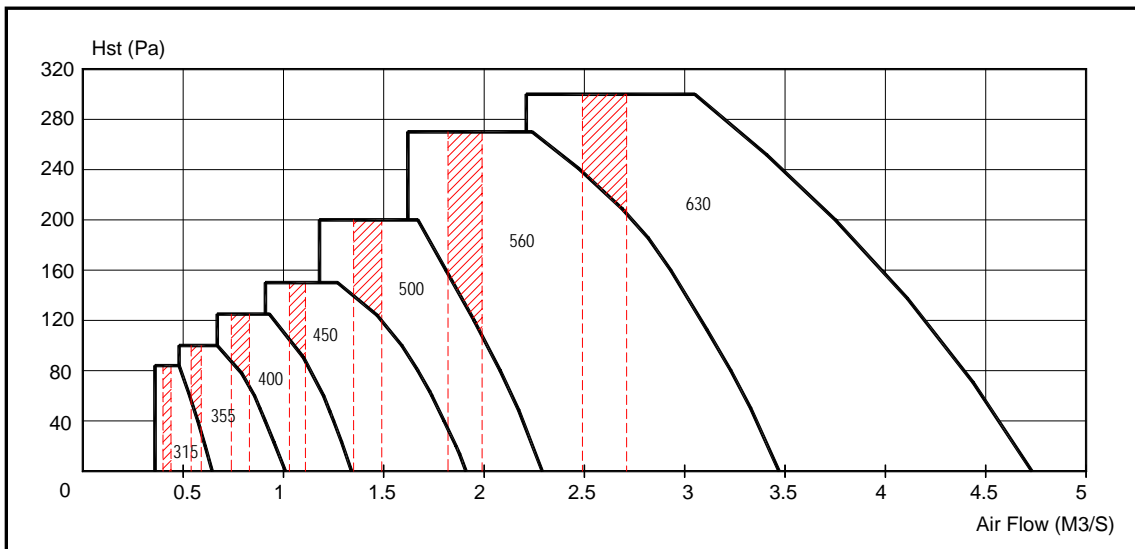
* Motor frame size beyond this range, please consult KRUGER for details --- Weight without motor and impeller.

The company is always improving and developing its products, therefore the company reserves the right of making changes to the illustrated products. Certified dimension can be provided upon request.

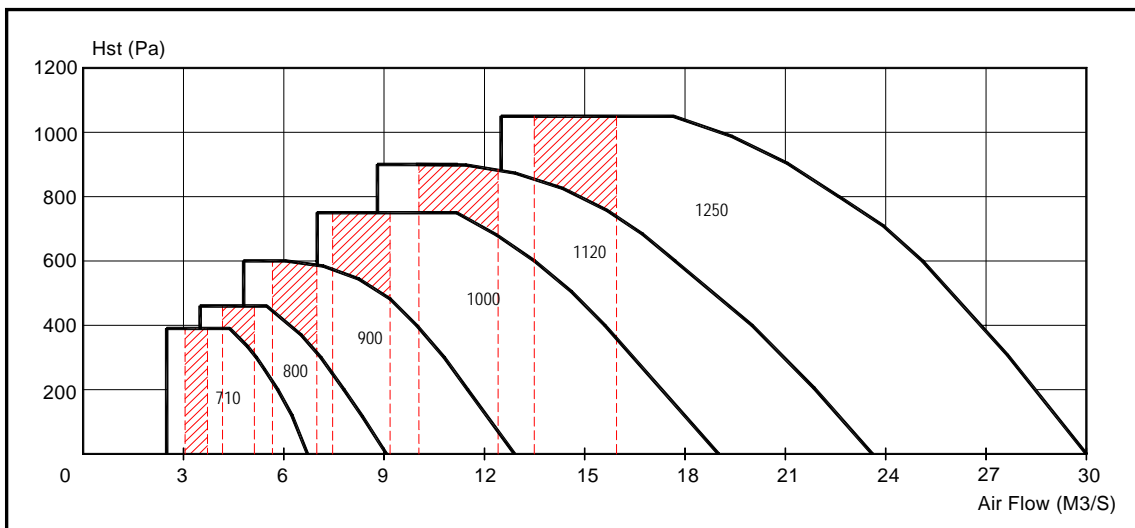
2 POLES - 2800 RPM



4 POLES - 1420 RPM

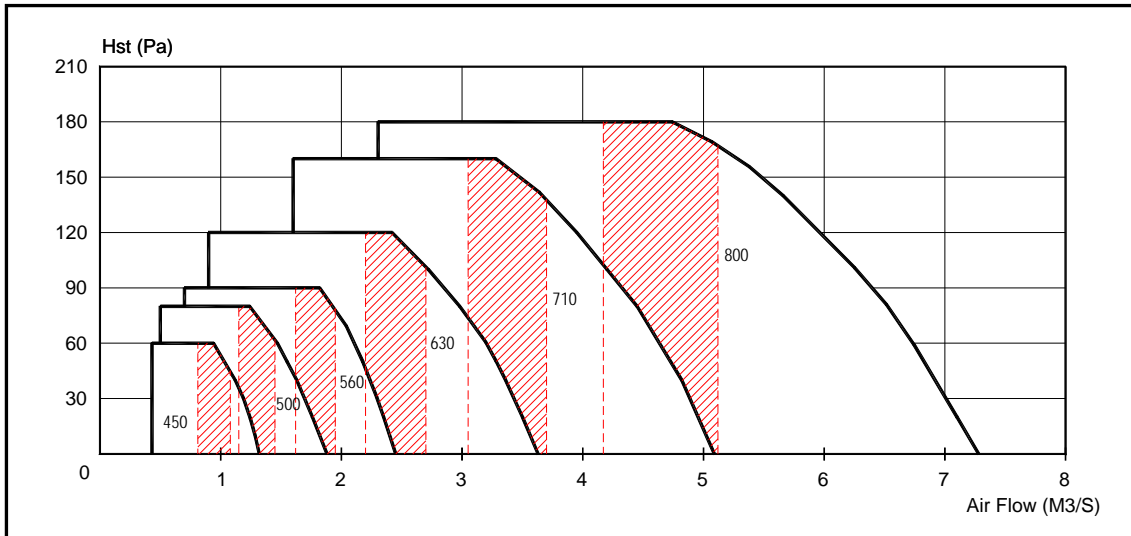


4 POLES - 1420 RPM

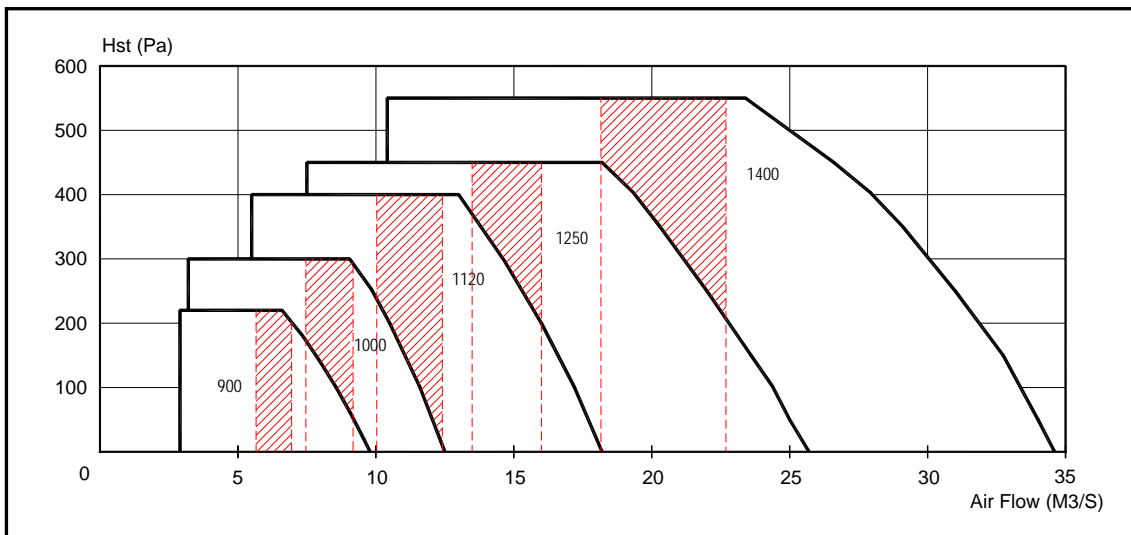


*** Shaded portion is the recommended operating range based on the duct velocity consideration (friction loss of 1 Pa/m)

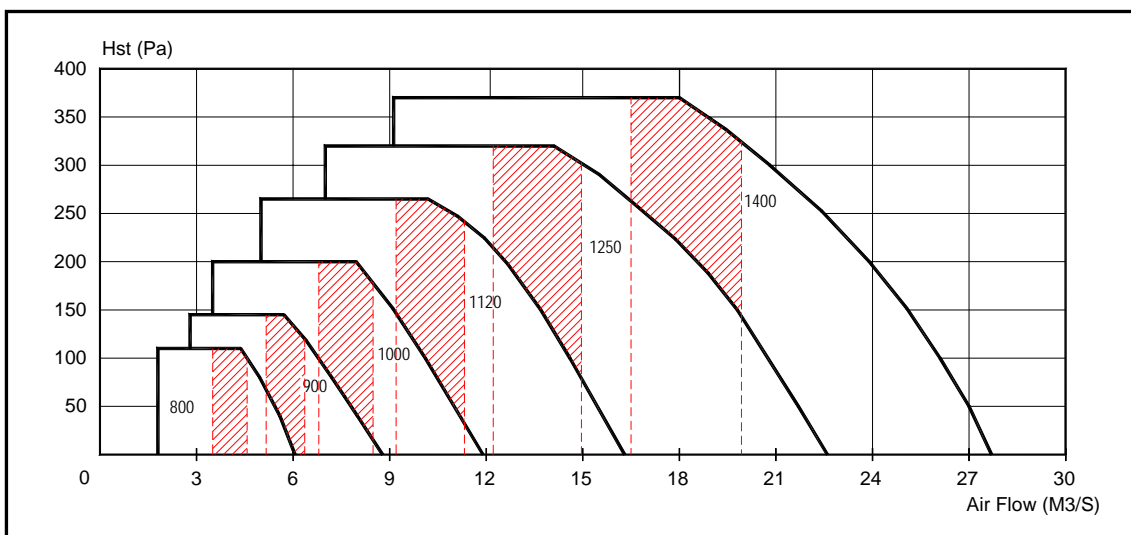
6 POLES - 900 RPM



6 POLES - 900 RPM

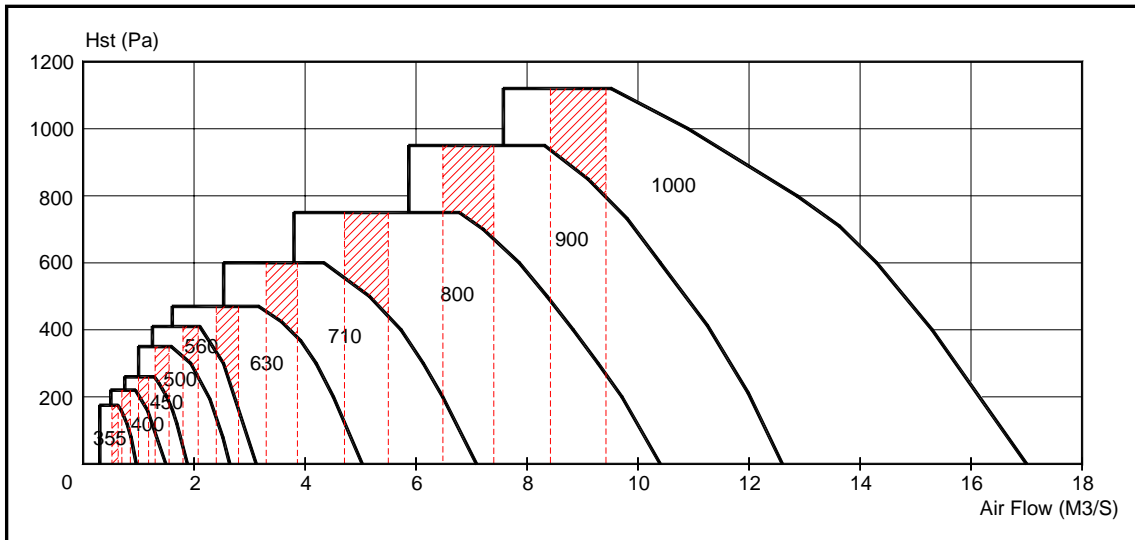


8 POLES - 720 RPM

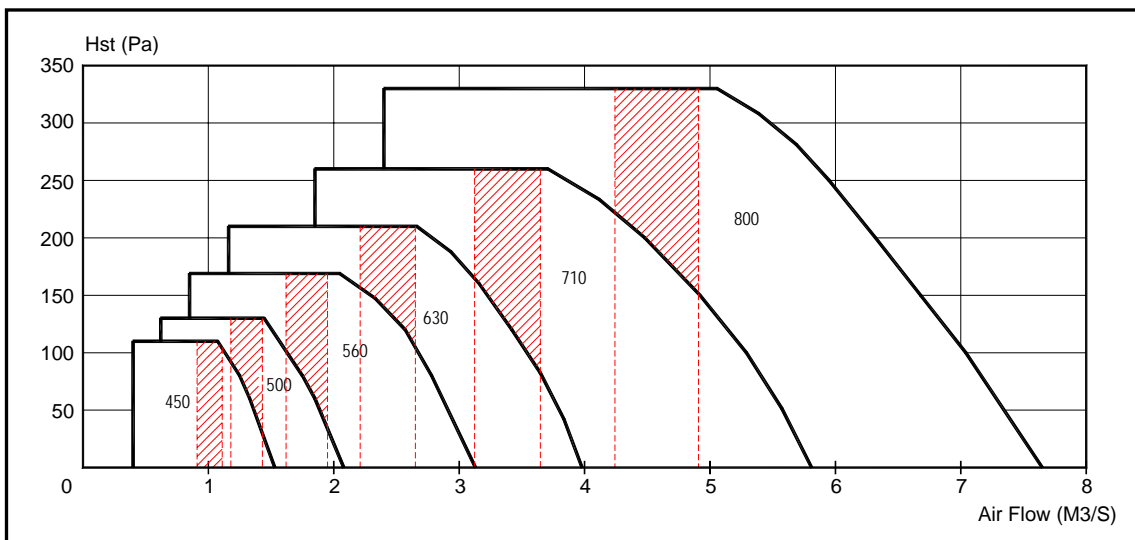


*** Shaded portion is the recommended operating range based on the duct velocity consideration (friction loss of 1 Pa/m)

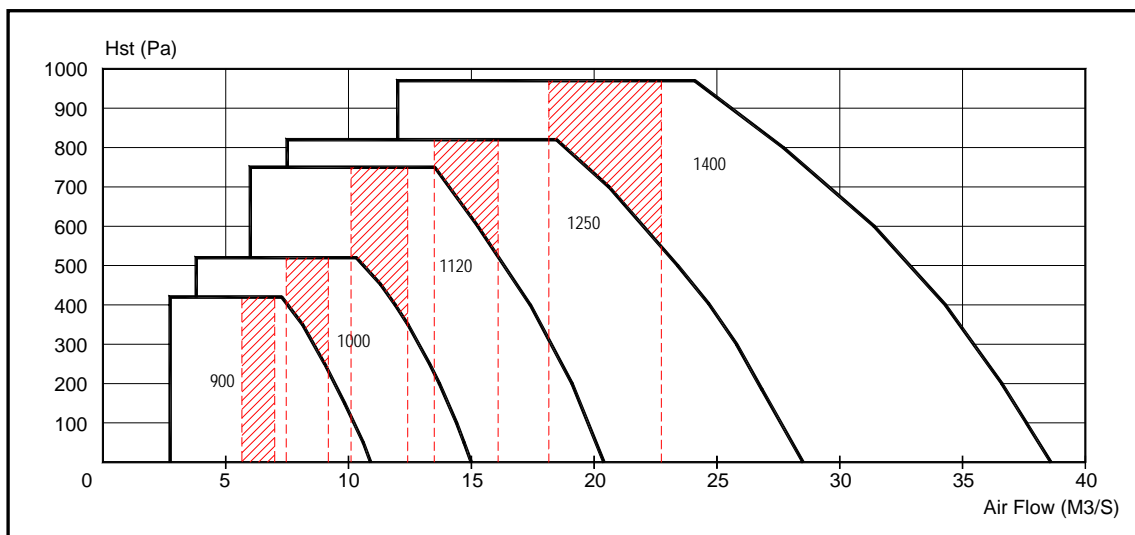
4 POLES - 1750 RPM



6 POLES - 1150 RPM



6 POLES - 1150 RPM



*** Shaded portion is the recommended operating range based on the duct velocity consideration (friction loss of 1 Pa/m)